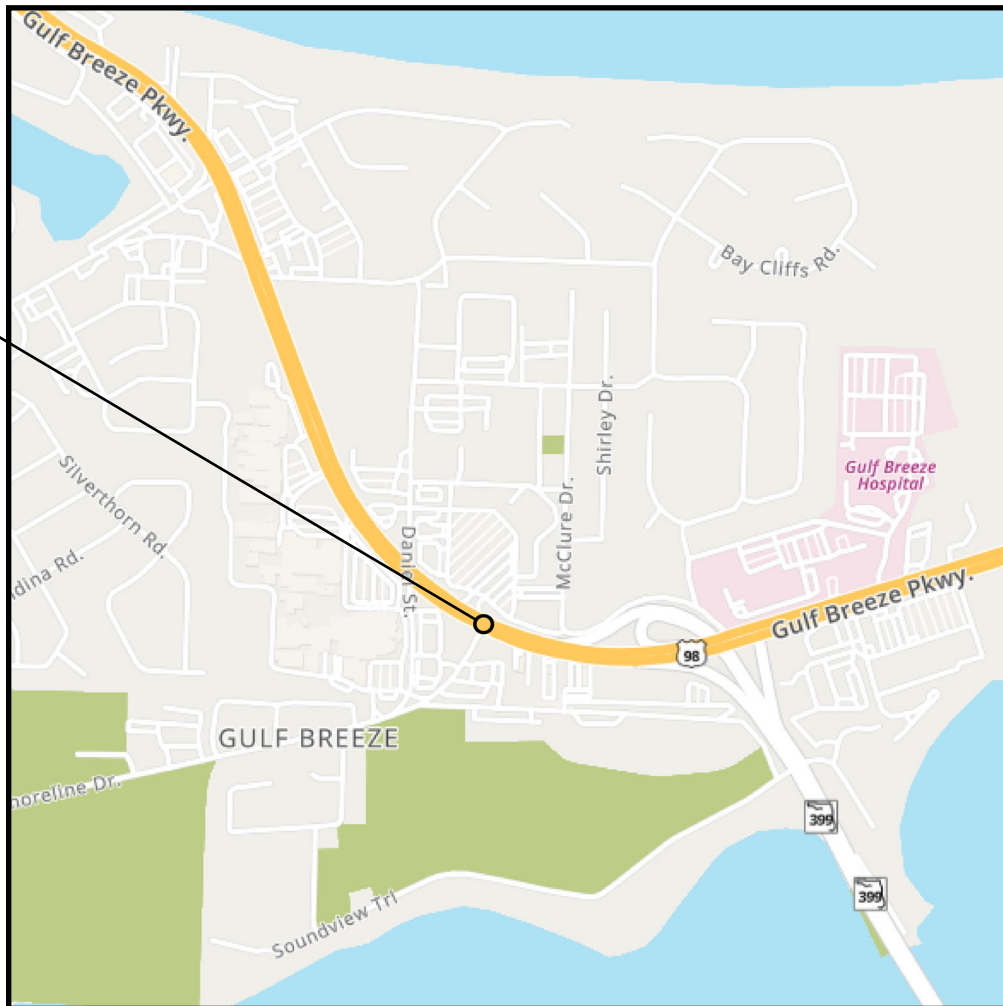
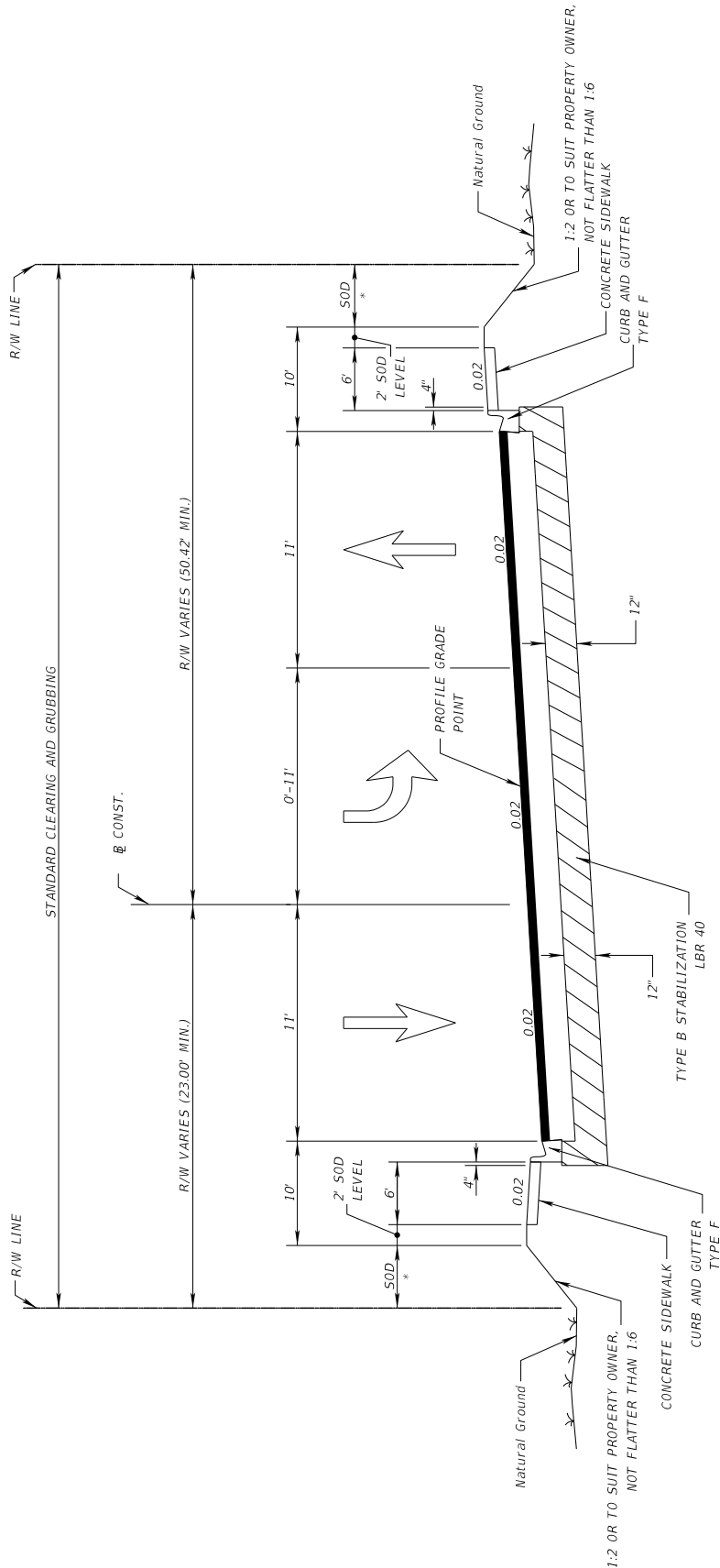


# LOCATION A

Address: 5555 S. Bay Cliffs Rd., Suite 100, Gulf Breeze, FL 32561

Parcel ID: 45555555-5555-5555  
Parcel Name: 5555 S. Bay Cliffs Rd.





**TYPICAL SECTION**  
**SHORELINE DRIVE**  
**STA. 194+28.29 TO STA. 199+52.20**

**TRAFFIC DATA**

CURRENT YEAR = 2023 AADT = 6,500  
 ESTIMATED OPENING YEAR = AADT =  
 ESTIMATED DESIGN YEAR = AADT =  
 K = % D = % T = % (24 HOUR)  
 DESIGN HOUR T = %  
 DESIGN SPEED = 30 MPH  
 CONTEXT CLASSIFICATION = N/A

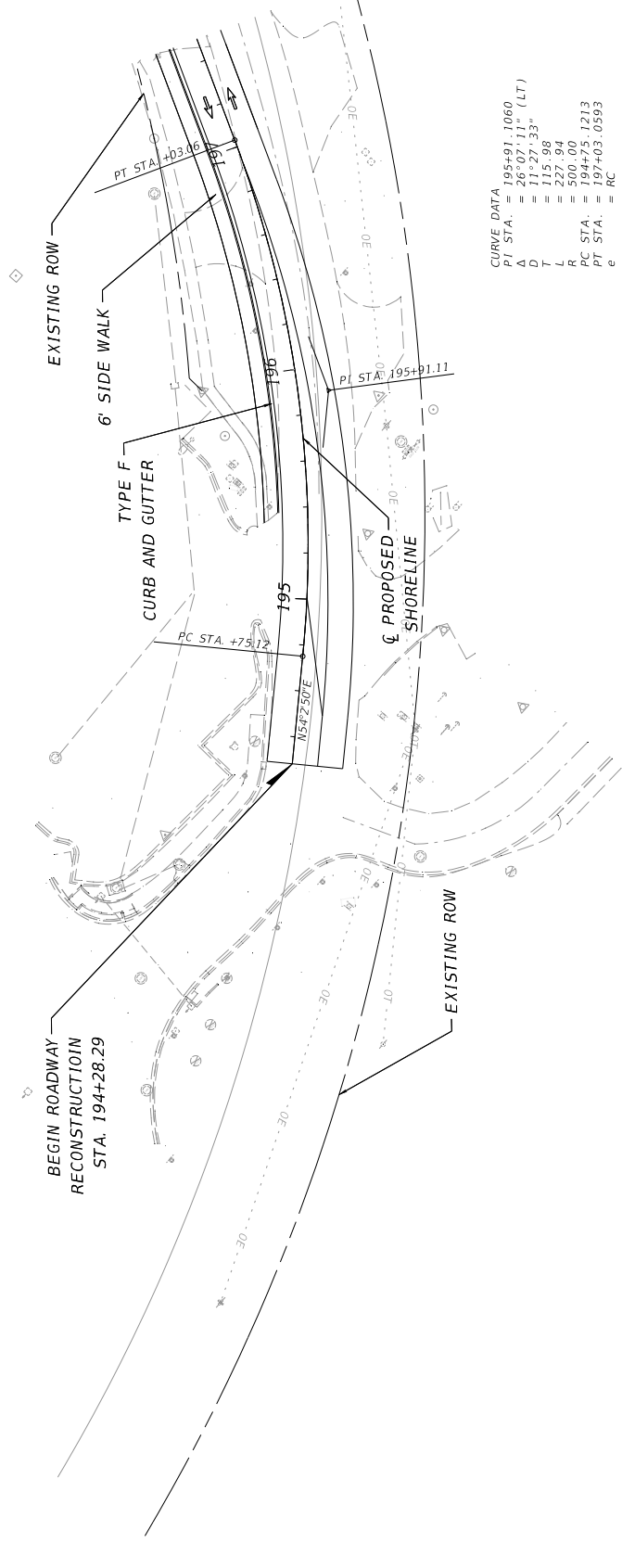
REVISIONS		DESCRIPTION	
DATE	DESCRIPTION	DATE	DESCRIPTION

ENGINEER OF RECORD		SANTA ROSA COUNTY	
WILLIAM P. WOODBERRY, P.E.		ROAD NO.	SR 30
P.O. BOX 29		COUNTY	SANTA ROSA
VILBERT, INC.		FINANCIAL PROJECT ID	451572-1-32-01
1836 HERMITAGE BLVD., SUITE 200			
TALLAHASSEE, FL 32308			

**TYPICAL SECTION**

SHEET NO.



CURVE DATA  
 PT STA. = 195+91.1060  
 Δ = 26°07'11" (LT)  
 D = 11°27'33"  
 T = 115.88  
 L = 227.94  
 R C STA. = 500.00  
 PT STA. = 194+03.0593  
 e = RC

THE OFFICIAL RECORD OF THIS SHEET IS THE ELECTRONIC FILE DIGITALLY SIGNED AND SEALED UNDER RULE 61G15-23.004, F.A.C.

REVISIONS		DESCRIPTION		DATE	

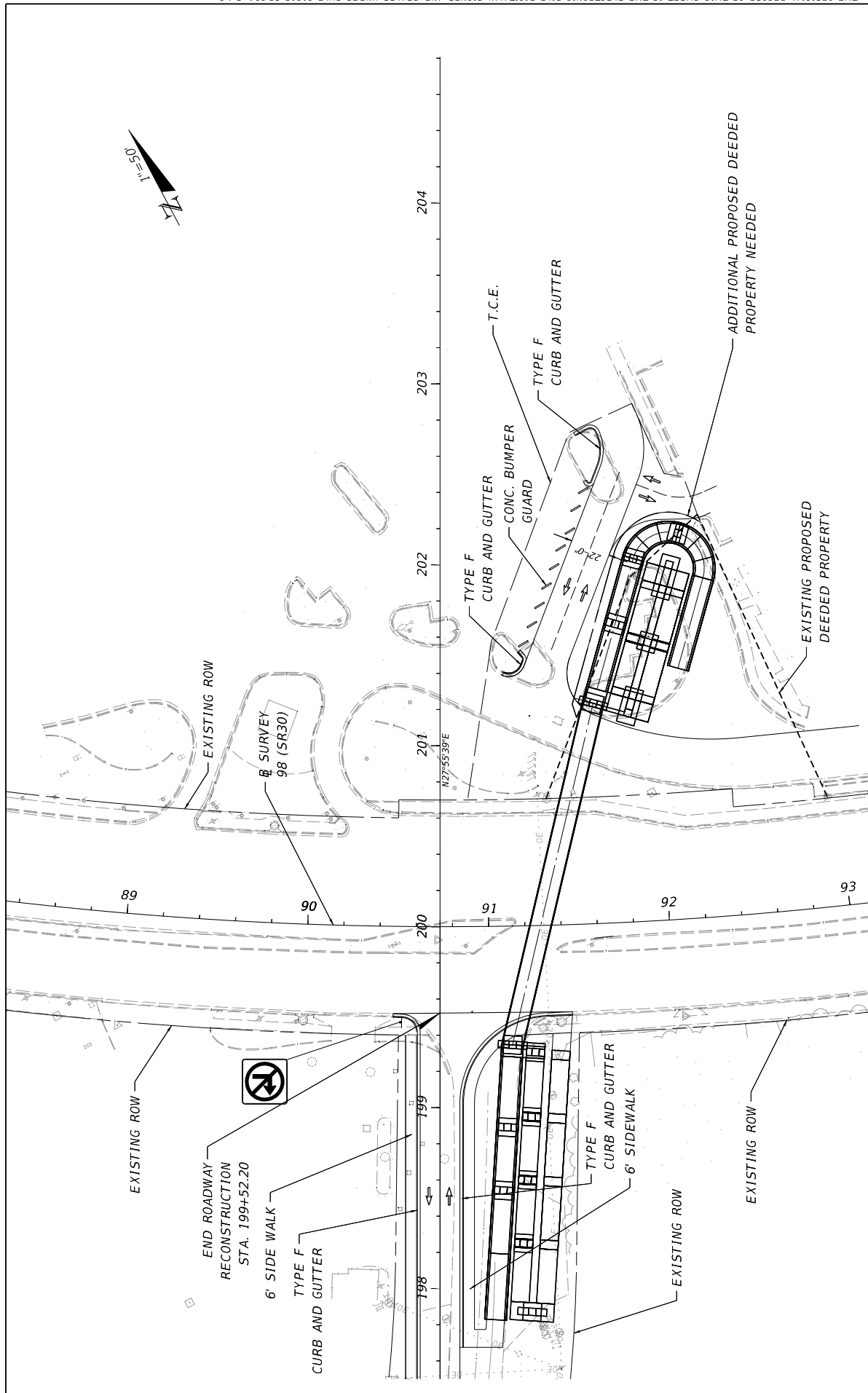
  

ENGINEER OF RECORD		STATE OF FLORIDA		DEPARTMENT OF TRANSPORTATION	
WILLIAM P. WOODBERY, P.E.		ROAD NO.		FINANCIAL PROJECT ID	
VILBERT, INC.		SR 30		451572-1-32-01	
1836 HERMITAGE BLVD., SUITE 200		COUNTY		SANTA ROSA	
TALLAHASSEE, FL 32308					

<b>ROADWAY PLAN</b>	
---------------------	--

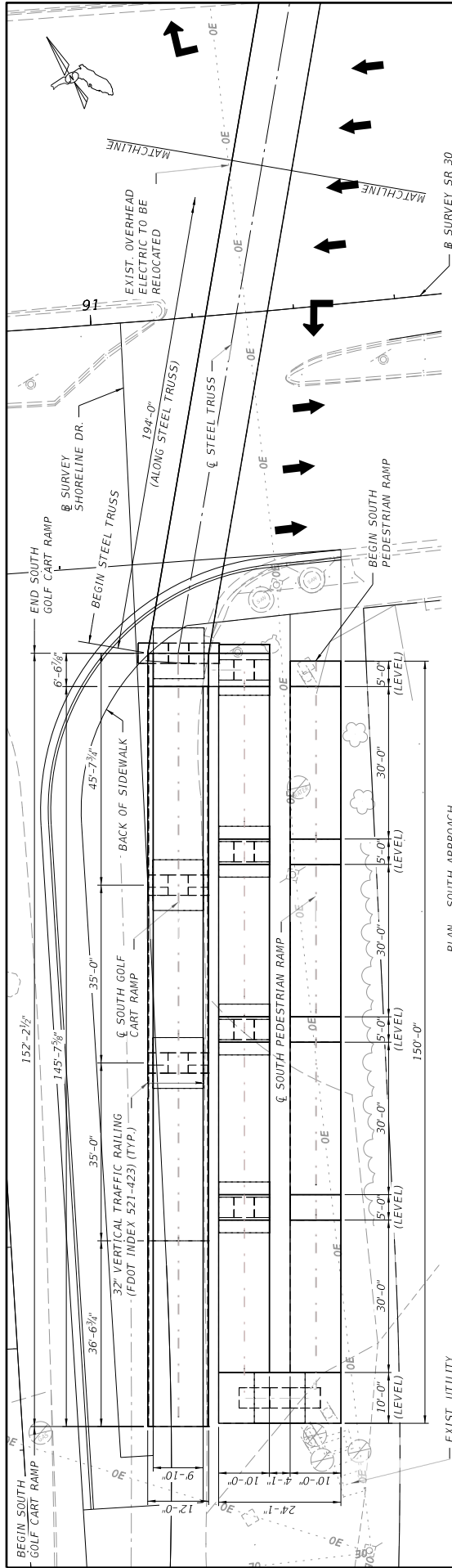
				SHEET NO.	
--	--	--	--	-----------	--



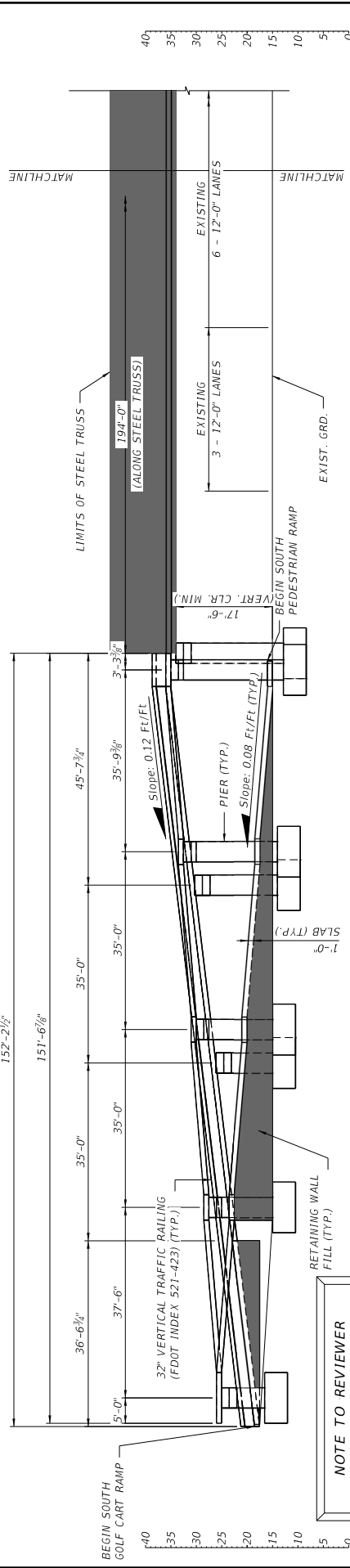
REVISIONS		DESCRIPTION	
DATE	DATE	DESCRIPTION	DESCRIPTION

ENGINEER OF RECORD WILLIAM P. WOODBERY, P.E. P.O. BOX 679 VOLKERT, INC. 1836 HERMITAGE BLVD., SUITE 200 TALLAHASSEE, FL 32308		STATE OF FLORIDA DEPARTMENT OF TRANSPORTATION ROAD NO. COUNTY FINANCIAL PROJECT ID SR 30 SANTA ROSA 451572-1-32-01	
<b>ROADWAY PLAN</b>			
SHEET NO.			



PLAN - SOUTH APPROACH



ELEVATION - SOUTH APPROACH

**NOTE TO REVIEWER**  
 PEDESTRIAN HANDRAIL NOT SHOWN.  
 PEDESTRIAN HANDRAIL TO BE STEEL  
 PEDESTRIAN/BICYCLE RAILING PER  
 FDOT INDEX 515-052 (TYPE 1)  
 18\"/>

DATE	BY	DESCRIPTION

DATE	BY	DESCRIPTION

DRAWING NO. KAV 01-23	STATE OF FLORIDA DEPARTMENT OF TRANSPORTATION	SHEET TITLE PLAN AND ELEVATION (1 OF 2)
DESIGNED BY KYLE J. VARGHA	COUNTY SANTA ROSA	PROJECT NAME GULF BREEZE PARKWAY PEDESTRIAN BRIDGE
CHECKED BY JIM WALKER	ROAD NO. SR 30	PROJECT NO. 451572-1-32-01
LICENSE NUMBER 88474	COUNTY SANTA ROSA	SHEET NO. 000
ADDRESS 1100 W. SHORE BLVD. TAMPA, FL 33607	COUNTY SANTA ROSA	SHEET NO. 000

