



MEASUREMENTS & QUANTITIES

FEATURES/MATERIALS	DETAILS
AREA OF TURF	85,637 SQ. FT.
TURF PERIMETER	1,223 LF



Hellas Construction, Inc.
12000 West Parmer Lane
Austin, TX 78613

(P) (512) 250-2910
(F) (512) 250-1960
hellasconstruction.com

OWNER:
City of Gulf Breeze
1070 Shoreline Drive
Gulf Breeze, Florida 32561
(850)934-5100

PROJECT:
SYNTHETIC TURF ATHLETIC FIELD

PROJECT LOCATION:
GULF BREEZE, FLORIDA

matrix^H TURF

COLOR RENDERINGS WITHIN THIS TURF SUBMITTAL
REPRESENT TURF SCOPE ONLY. IF SHOWN, TRACK
LAYOUT, TRACK COLORS AND AERIAL IMAGE ARE
DEPICTED FOR GENERAL OVERVIEW.



COMMENTS:
Drawing scale accurate ONLY when printed on 11x17
paper.

DRAWN BY: BMR

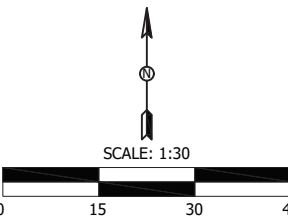
All drawings and written material appearing herein
constitute original unpublished work, and may not be
duplicated, used or disclosed without the written
consent of Hellas Construction, Inc.

DATE:
JULY 28, 2021

REVISION:
1.1

SHEET TITLE:
COLOR RENDERING

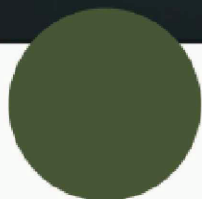
SHEET NUMBER:
8 OF 8



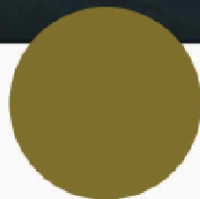
TURF COLOR OPTIONS



LIME GREEN
PANTONE 2278C



DARK GREEN
PANTONE 2280C



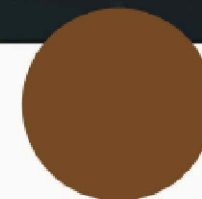
ARMY OLIVE
PANTONE 4495C



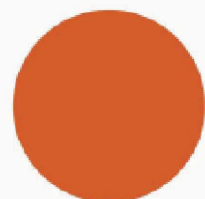
YELLOW
PANTONE 2006C



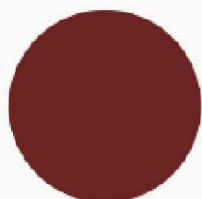
GOLD
PANTONE 7550C



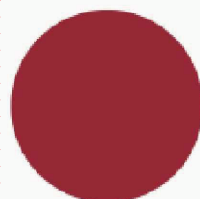
CAMEL
PANTONE 2314C



ORANGE
PANTONE 166C



TERRA COTTA
PANTONE 1685C



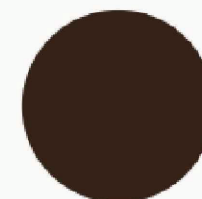
RED
PANTONE 200C



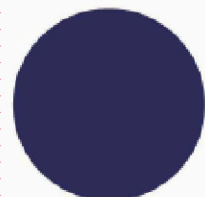
CRIMSON
PANTONE 7428C



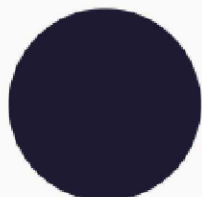
MAROON
PANTONE 188C



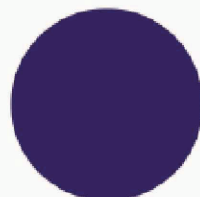
BROWN
PANTONE 476C



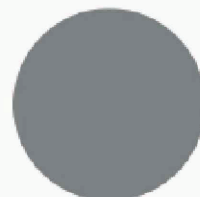
FLORIDA BLUE
PANTONE 2767C



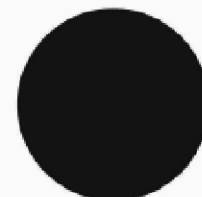
NAVY BLUE
PANTONE 289C



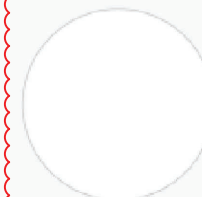
PURPLE
PANTONE 2695C



SILVER
PANTONE 430C



BLACK
6C



WHITE
1C

PLEASE NOTE: Printed colors may vary. For an accurate color comparison, please reference the Pantone® color with a Pantone® (PMS) swatch book. Custom colors available upon request.