



# City of Gulf Breeze

## City of Gulf Breeze - Deadman's Island Riprap Restoration Project

---

### **Project Overview**

The City of Gulf Breeze is seeking bids from qualified contractors to restore an approximate 130-foot section of riprap on the northeast end of Deadman's Island in Gulf Breeze, Florida.

### **Scope of Work/ Specifications**

#### 1. Project Inspection and Permitting

- A mandatory pre-bid will be held.
- Contractor will be responsible for securing a material staging area outside of the project location.
- Owner has secured all applicable permits. Contractor will be required to abide by permit requirements within work area, to include Department of Historical Resources requirements.

#### 2. Purchase and Install new Rip Rap

- Turbidity curtain is required to be installed prior to commencement of work and maintained during length of project.
- Contractor is to source approximately 111 cubic yards (150 tons) of Class 2 Rip Rap rock.
- The estimated length of the installation area is 130-foot length. Six sections of riprap are to be added to a final measurement of 6 feet wide by 5 feet tall.
- New riprap is to be placed on top of existing riprap and shaped either by hand using labor or machine.

#### 3. Site Work Limitations

- All Riprap must be carried by barge, land access is not providable. Contractor will be responsible for securing a material storage area outside of project location.
- Installation barge(s) and long reach excavator, or similar equipment, are required. Offloading of machinery or materials onto restoration area is prohibited.
- Project work schedule will need to be phased with tide and depth of surrounding water to ensure access to site is possible.



# City of Gulf Breeze

## General Notes

1. The Contractor shall comply with all applicable local, state, and federal regulations. All construction work shall be in compliance with applicable local, state, and federal codes, rules, or requirements, including but not limited to underground utilities, erosion and sediment control, hazardous material, etc.
2. The Contractor is required to visit the site and note the existing conditions prior to bidding.
3. The Contractor must notify the city at least 72 hours prior to commencement of construction. Daytime work hours for the City of Gulf Breeze are Monday through Friday 7AM to 9PM and Saturday and Sunday 8AM to 9PM. Weekend work must be approved by the City.
4. The Contractor is responsible for all damages to any utilities caused as a result of construction activities.
5. The Contractor shall limit construction activities to the designated area and is liable for all damage to and restoration of all area within the project.
6. The Contractor is responsible for repairing damages caused by construction activities to existing features including but not limited to fences, storm drains, driveways, sidewalks, mailboxes, landscaping, sprinklers, or any disturbed private property. The contractor is responsible for immediately notifying the City of damage to private property.
7. The Contractor is responsible for preventing the unauthorized access or use of completed work, equipment and material.
8. The Contractor is responsible for maintenance of traffic during construction activities, including but not limited to: preserving a safe environment for pedestrians, cyclists, motorists, etc; preventing pedestrians and vehicles from conflicting with construction; and taking necessary precautions during morning and afternoon hours to ensure a safe environment for children, school students, and school buses.
9. The Contractor shall not remove or trim any trees or vegetation without approval from the City of Gulf Breeze.
10. The Contractor is responsible for maintaining satisfactory conditions of the construction area, including but not limited to removing debris, clean-up fuel or chemical spills, and disposal of garbage, plastic bottles, food wrappers, cigarette butts, or other litter resulting from construction activities.
11. The City will conduct routine inspections of the construction site. The Contractor must notify the City at least 48 hours prior to the time any inspection is required and after each phase of work. No final testing will be accepted unless witnessed by the City or its representative.

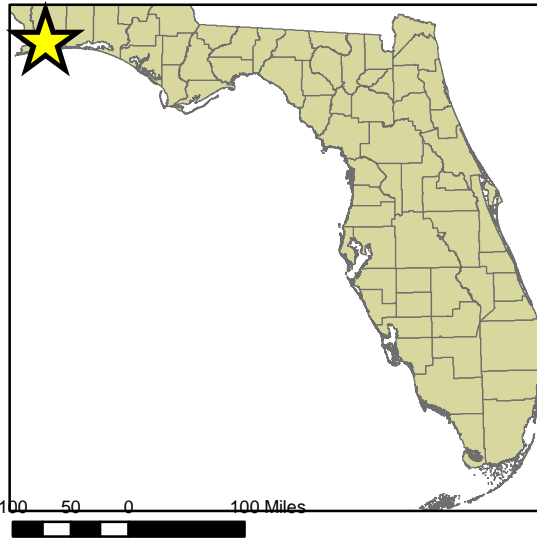


# *City of Gulf Breeze*

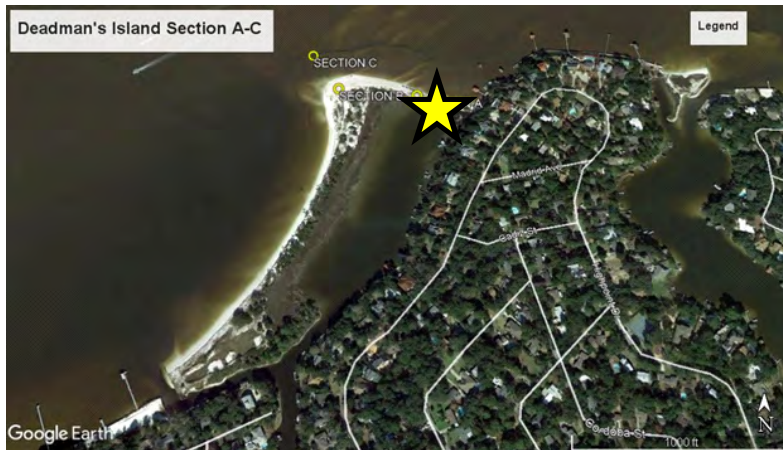
## **Attachments**

Deadman's Island Restoration Project Drawing Packet

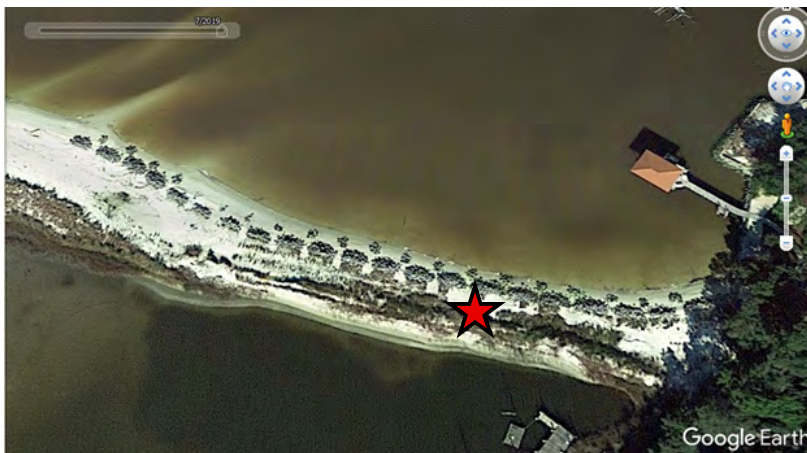
# Project Vicinity Map-Deadman's Island Santa Rosa County



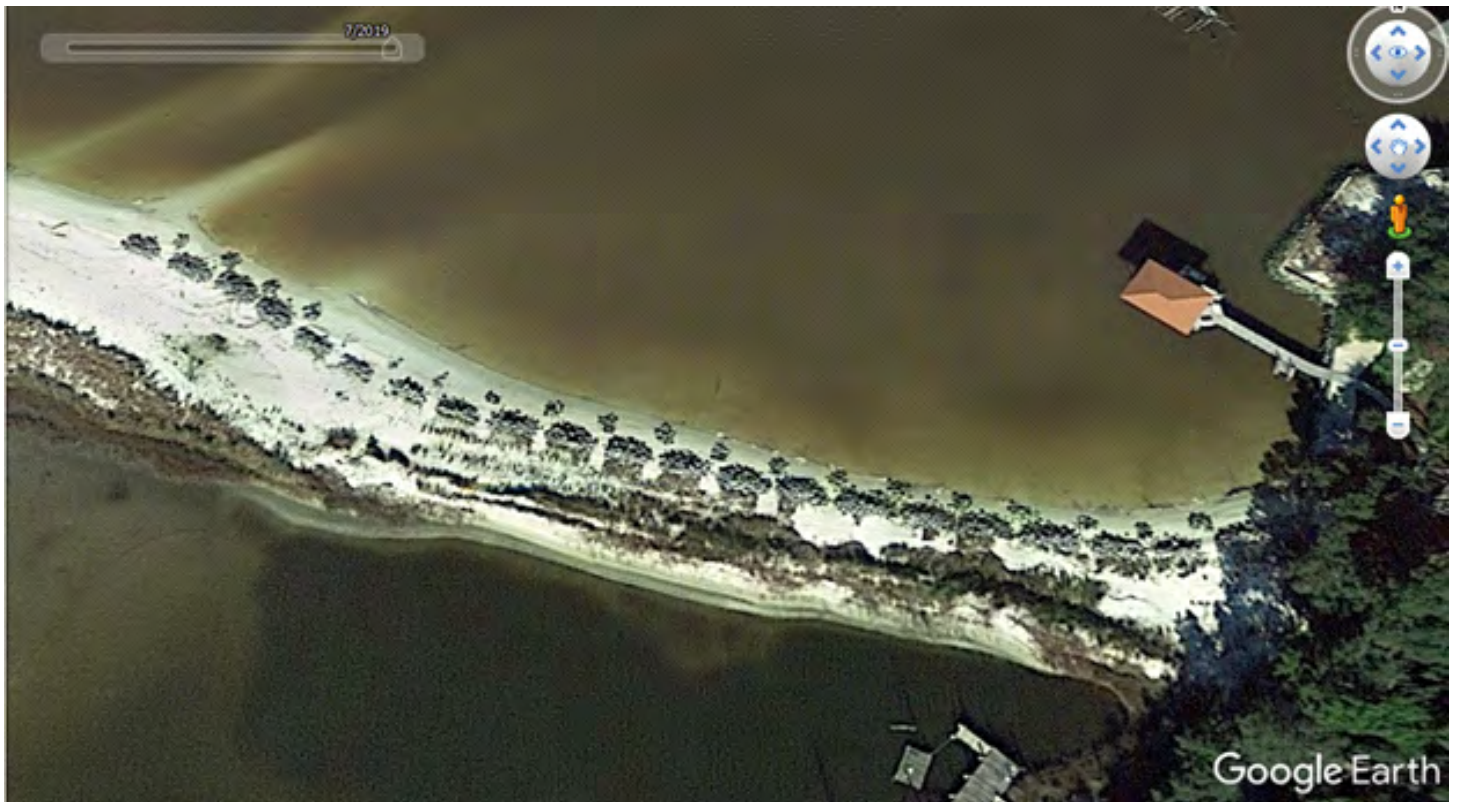
Santa Rosa County



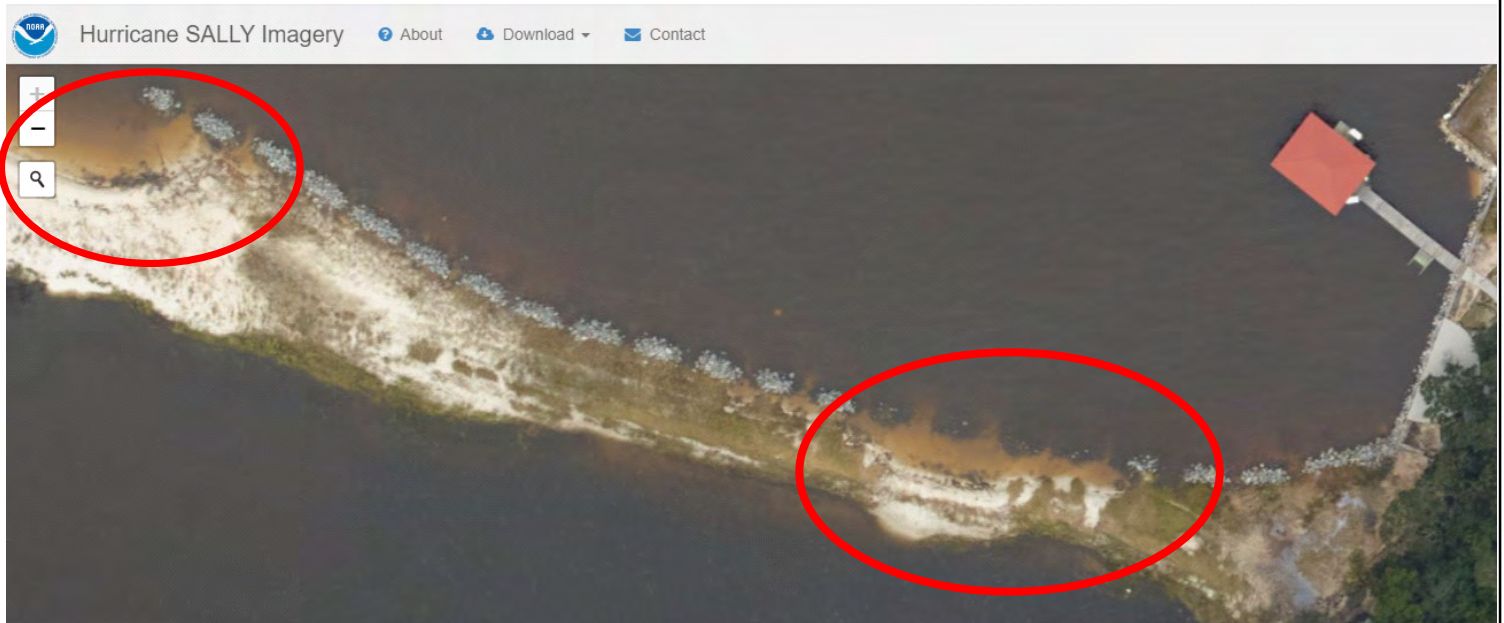
The City of Gulf Breeze  
Deadman's Island  
Santa Rosa County



Deadman's Island Isthmus  
Gilmore Bayou  
Santa Rosa County



*Deadman's Island Isthmus repair project 2019, before Hurricane Sally*



*Section A- Isthmus Project - circled in red are areas of impact from Hurricane Sally September 16, 2020. Aerial photo taken September 19, 2020.*

The City of Gulf Breeze  
 Deadman's Island Restoration Project Isthmus  
 Parcel # 06-3S-29-0000-00100-0000

**ECOLOGICAL CONSULTING SERVICES**

**DRAWN BY:** HEATHER REED **DATE:** 9/14/2021

**SHEET NO.** PM@ ECOLOGICALCONSULTINGSERVICES.COM

1 of 6

PHONE: 850-359-6688

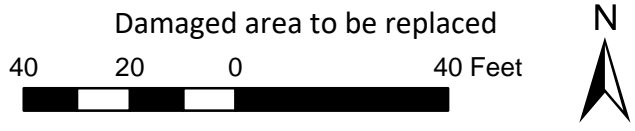
WWW.ECOLOGICALCONSULTINGSERVICES.COM



# Hurricane Sally sand and riprap damage DMI Isthmus



Source: Esri, Maxar, GeoEye, Earthstar Geographics, CNES/Airbus DS, USDA, USGS, AeroGRID, IGN, and the GIS User Community



The City of Gulf Breeze  
 Deadman's Island Restoration Project Isthmus  
 Parcel # 06-35-29-0000-00100-0000

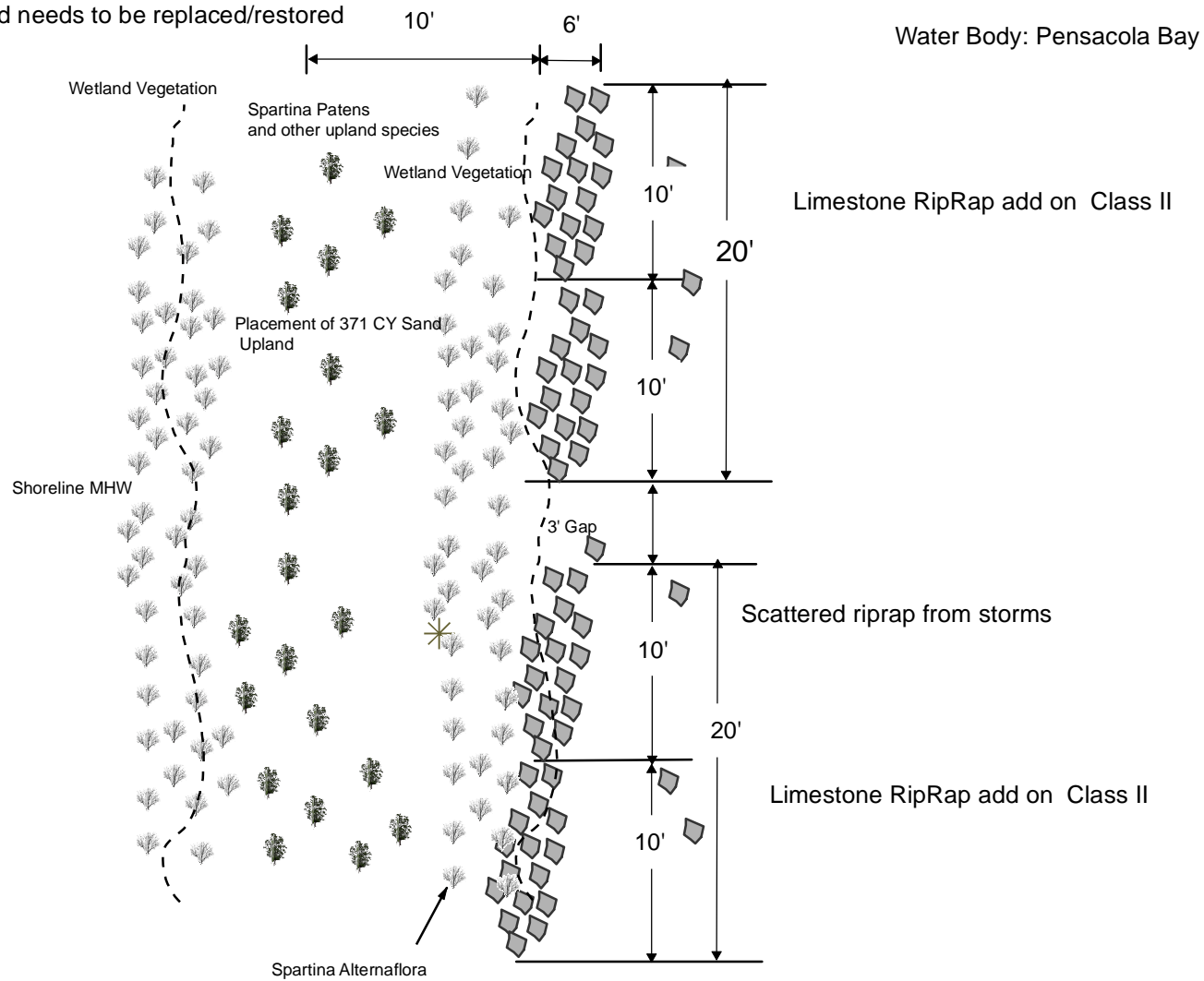


<b>ECOLOGICAL CONSULTING SERVICES</b>	
DRAWN BY: HEATHER REED	DATE: 9/14/2021
SHEET NO. 2 of 6	PM@ECOLOGICALCONSULTINGSERVICES.COM PHONE: 850-359-6688 WWW.ECOLOGICALCONSULTINGSERVICES.COM

# Top View



Note: 100 LF was damaged and needs to be replaced/restored



The City of Gulf Breeze  
 Deadman's Island Restoration Project Isthmus  
 Parcel # 06-35-29-0000-00100-0000

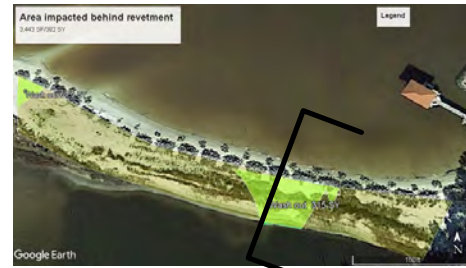


**ECOLOGICAL CONSULTING SERVICES**

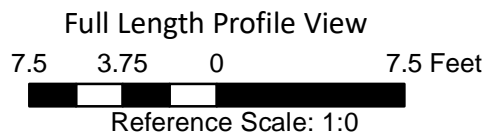
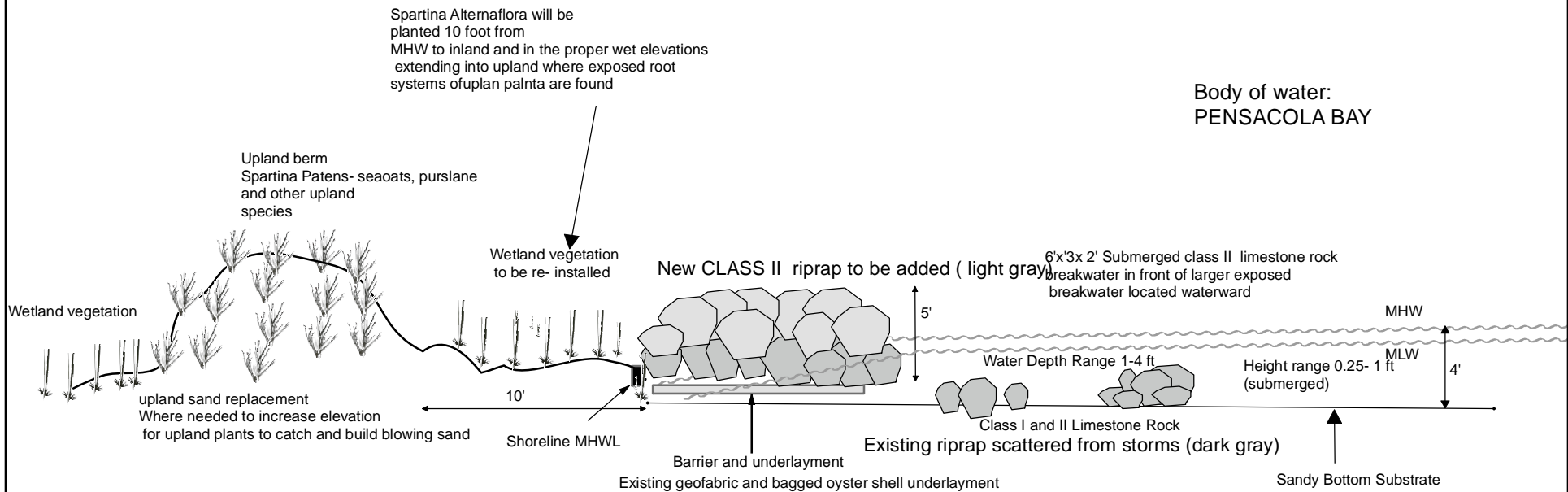
DRAWN BY: HEATHER REED DATE: 9/14/2021

SHEET NO. 3 of 6  
 PM@ECOLOGICALCONSULTINGSERVICES.COM  
 PHONE: 850-359-6688  
 WWW.ECOLOGICALCONSULTINGSERVICES.COM

# CROSS SECTION Deadman's Island Isthmus



CROSS SECTION A



Coordinate System: GCS WGS 1984  
Datum: WGS 1984  
Units: Degree Elevation:NAVD 88



**ECOLOGICAL CONSULTING SERVICES**

DRAWN BY: HEATHER REED DATE: 9/14/2021

SHEET NO. 4 of 6  
 PM@ECOLOGICALCONSULTINGSERVICES.COM  
 PHONE: 850-359-6688  
 WWW.ECOLOGICALCONSULTINGSERVICES.COM