

STATE OF THE CITY ADDRESS

January 13, 2022



[Click Here to View Year in Review Video](#)

ABOUT THE NATIONAL COMMUNITY SURVEY

The NCS measures “**Quality of Life**” in 10 areas, comparing communities of any size nationally.



NATIONAL BENCHMARK COMPARISONS

The NCS also provides comparisons to **benchmarks from over 600 communities** whose residents evaluated the same kinds of topics. Of the 148 standard questions, Gulf Breeze ranks significantly higher than the national average in 68 of 148 national benchmark comparisons.



LIVABILITY

THE CITY SCORED HIGHER THAN THE NATIONAL AVERAGE IN **EVERY** QUALITY-OF-LIFE CATEGORY IN THE SURVEY, INCLUDING:

GULF BREEZE RANKED
HIGHER THAN THE
NATIONAL AVERAGE
IN 5 AREAS

Safety
Natural Environment
Parks & Recreation
Inclusivity & Engagement
Health & Wellness
Opportunities

#1*

Quality of Gulf Breeze as a place to
live, raise children and to retire

* in each category

#1

Sense of Community

#3

Overall quality of life

#15

Overall image
and reputation
of Gulf Breeze

#7

Likelihood to remain in Gulf Breeze for the
next five years



#21

Likelihood to
recommend living
in Gulf Breeze to
others

STRONG GOVERNANCE

The City ranked higher than the national average in every government performance category.

Honesty	Quality of customer service from the city	Treating residents with respect	Value of services for taxes paid to the city	Acting in the best interests of the community	Treating residents fairly
Confidence in the City's government	Overall direction the city is taking	Welcoming resident involvement	Openness and transparency	Informing residents about issues	Public information services

CITIZEN SCORE CARD

GULF BREEZE STRATEGIC PLAN GOALS AND % POSITIVE RESPONDENT RATING



82%

Responsible and financially sound government providing exceptional services



79%

Investing and upgrading infrastructure (facilities, parks, utilities, etc.)



82%

Environmental Sustainability (preserving and enhancing the natural environment)



57%

Improving the local economy (fostering small business and infill redevelopment)



93%

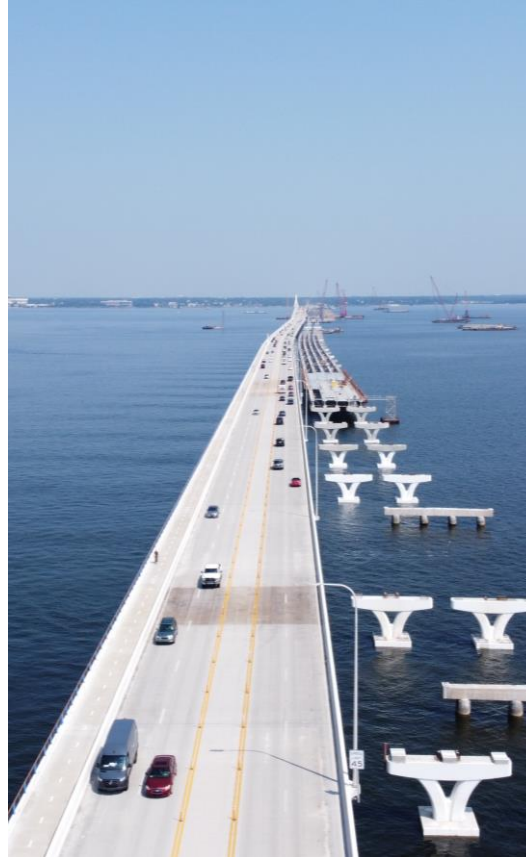
Great neighborhoods for families and retirees

RESIDENTS WANT...

RESIDENTS WANT
THE CITY TO FOCUS
THE MOST ON THESE
GOALS IN THE NEXT
TWO YEARS:

Growing the local
economy

Quality of local
infrastructure

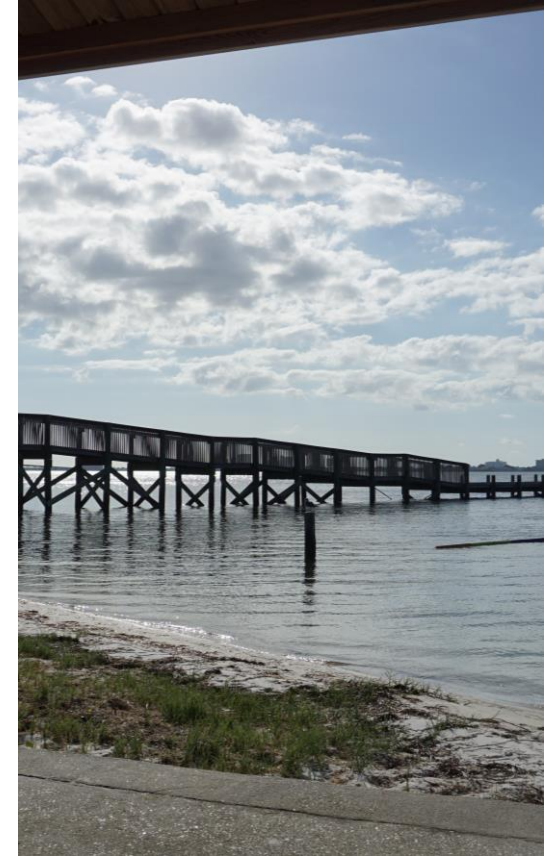


RESIDENTS WANT
A CONTINUED FOCUS
ON MAINTAINING
THE
HIGH QUALITY OF:

Safety

Natural Environment

Parks & Recreation



GROWTH MANAGEMENT



53%

are against growth
within the City but in
favor of redeveloping
under-utilized
properties



35%

support new
developments
within the city



11%

are against growth within
the city

RESIDENT PARTICIPATION SAMPLE SIZE

21%

City sample size
(528 households
out of 2,654)

Survey results were weighted so that the **demographic profile of respondents was representative** of the demographic profile of adults in Gulf Breeze

95%

Confidence level is 95% meaning if the same survey were to be repeated 100 times under the same conditions, 95 times out of 100 the measure would lie somewhere within the margin of error

4%

Margin of error around any reported percentage is 4%

- Hard copy surveys provided to residents
- Residents assisted by phone, email, and in-person
- Extensive outreach efforts/promotions conducted



“BREEZERS” APPRECIATE...



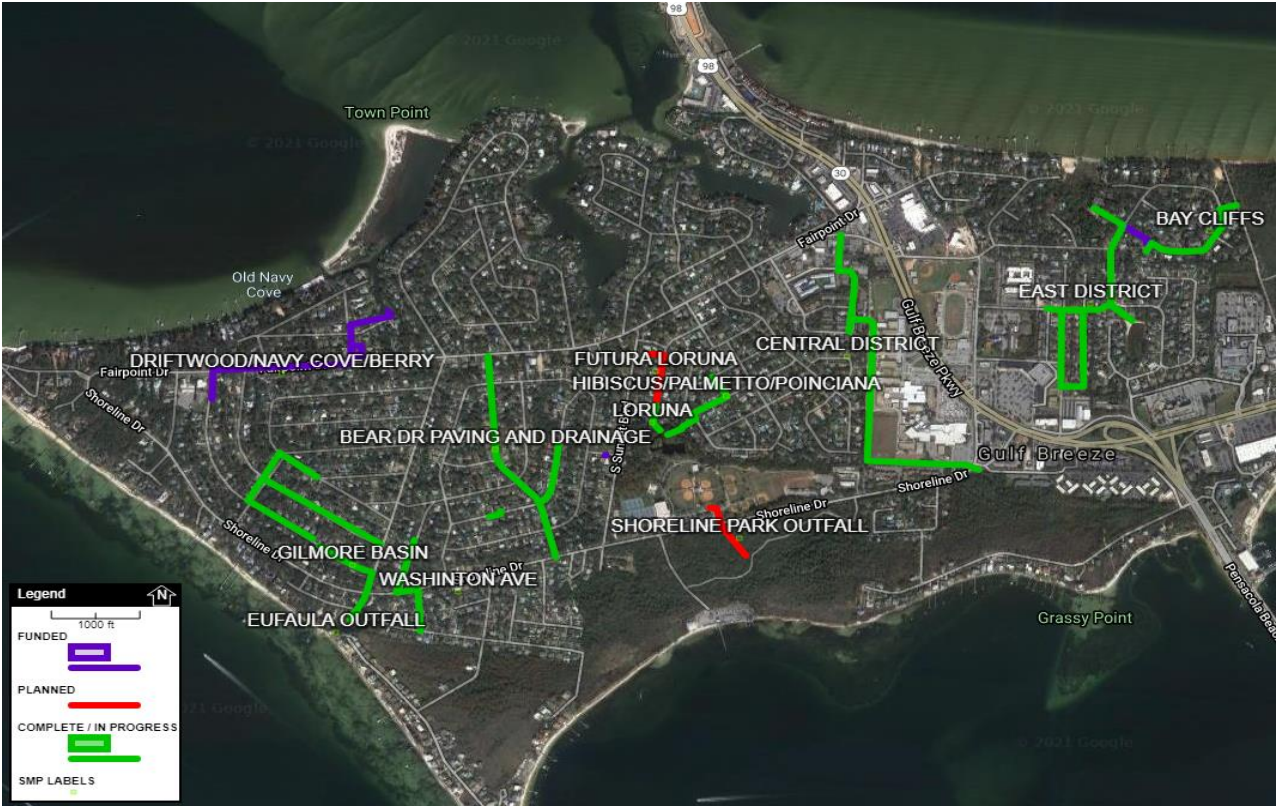
- Police services & crime prevention
 - Emergency preparedness
 - Preservation of natural areas
 - K-12 education
 - Sense of community
 - Neighborhood quality
- Ease of travel by car, foot, and bicycle
- Appearance & cleanliness



STRATEGIC PRIORITIES

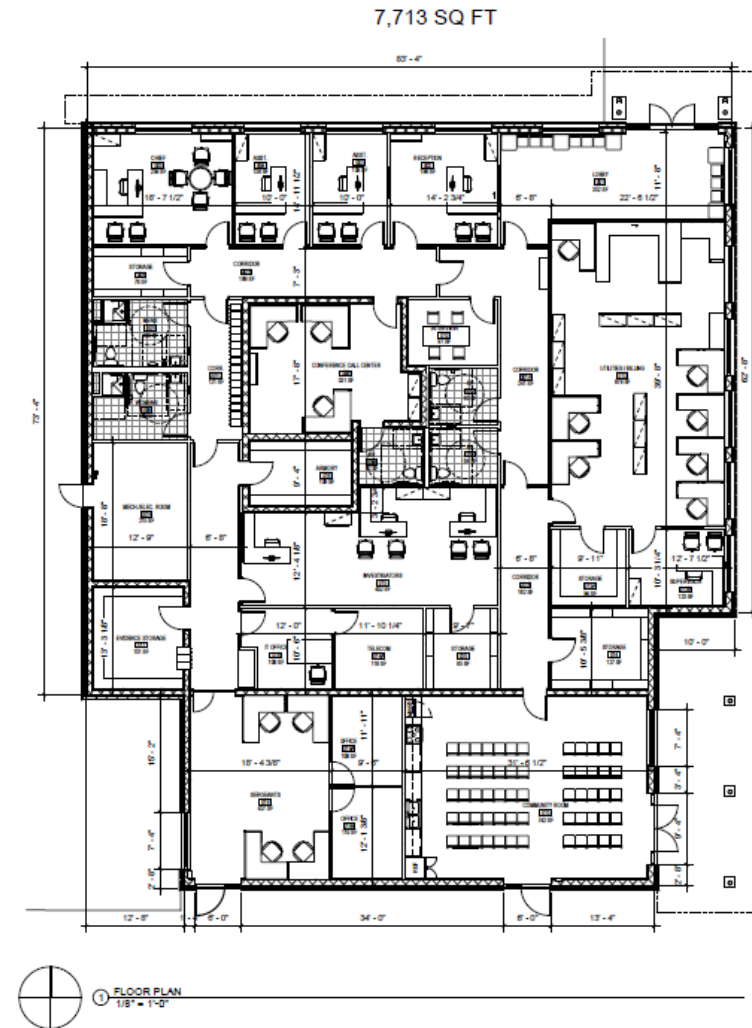
Keystone	Focus	Score Card	Projects
Neighborhoods	Maintain quality	93% positive	<ul style="list-style-type: none"> • Shoreline – Fairpoint Multi-use path • Neighborhood Enhancement Plans • SR 399 overpass study • Hwy 98 multimodal design
Environmental	Maintain quality	82% positive	<ul style="list-style-type: none"> • Septic Tank Elimination • Natural Resources Division • Reclaim Water
Responsible City	Maintain quality	82% positive	<ul style="list-style-type: none"> • 18 yr - Excellence in Finance Reporting • 3 x Police Dept. Excelsior Rating • GB Chamber Community Leader
Infrastructure	High – Improve	79% positive	<ul style="list-style-type: none"> • Undergrounding of utilities • WWTP upgrade and reclaim loop • Stormwater Projects
Economy	High - Improve	57% positive	<ul style="list-style-type: none"> • CRA Improvements • Redevelopment (old CVS Bldg) • Covid-19 & Bridge closure biz support

STORMWATER PROJECTS



STORMWATER CAPITAL IMPROVEMENT PROJECTS	Bear Drive Project	FY2021	\$1,107,120.52
	Driftwood/NavyCove/Berry	FY2023	\$1,030,000.00
	Eastern District Drainage Project	FY2020	\$2,058,794.00
	Gilmore Basin Gravity Outfall	FY2022	\$1,050,000.00
	Eufaula Outfall Treatment	FY2022	\$757,000.00
	Shoreline Park Outfall		\$580,000.00
	Futura/Loruna Intersection		\$310,000.00
	Poinciana/Hibiscus/Palmettot	FY2021	\$154,000.00
	Additional Small Projects		\$250,000.00
	BayCliffs	Complete	\$400,000.00

POLICE DEPARTMENT AND CITY SERVICES ANNEX



TRAFFIC IMPROVEMENTS



UNDERGROUND UTILITIES HWY 98 AND NEIGHBORHOOD COLLECTORS



MULTI-USE PATHWAY, WETLANDS TRAIL BOARDWALK & PAVEMENT REHABILITATION



WETLANDS TRAIL BOARDWALK



PAVEMENT REHAB



RECREATIONAL FISHING/PADDLING AMENITIES



\$1 million in grant
improvements to Shoreline
Park, Vista Park and Woodland
Park

Refer to the 2020-2025
Strategic Plan for more
information



www.cityofgulfbreeze.us

--

