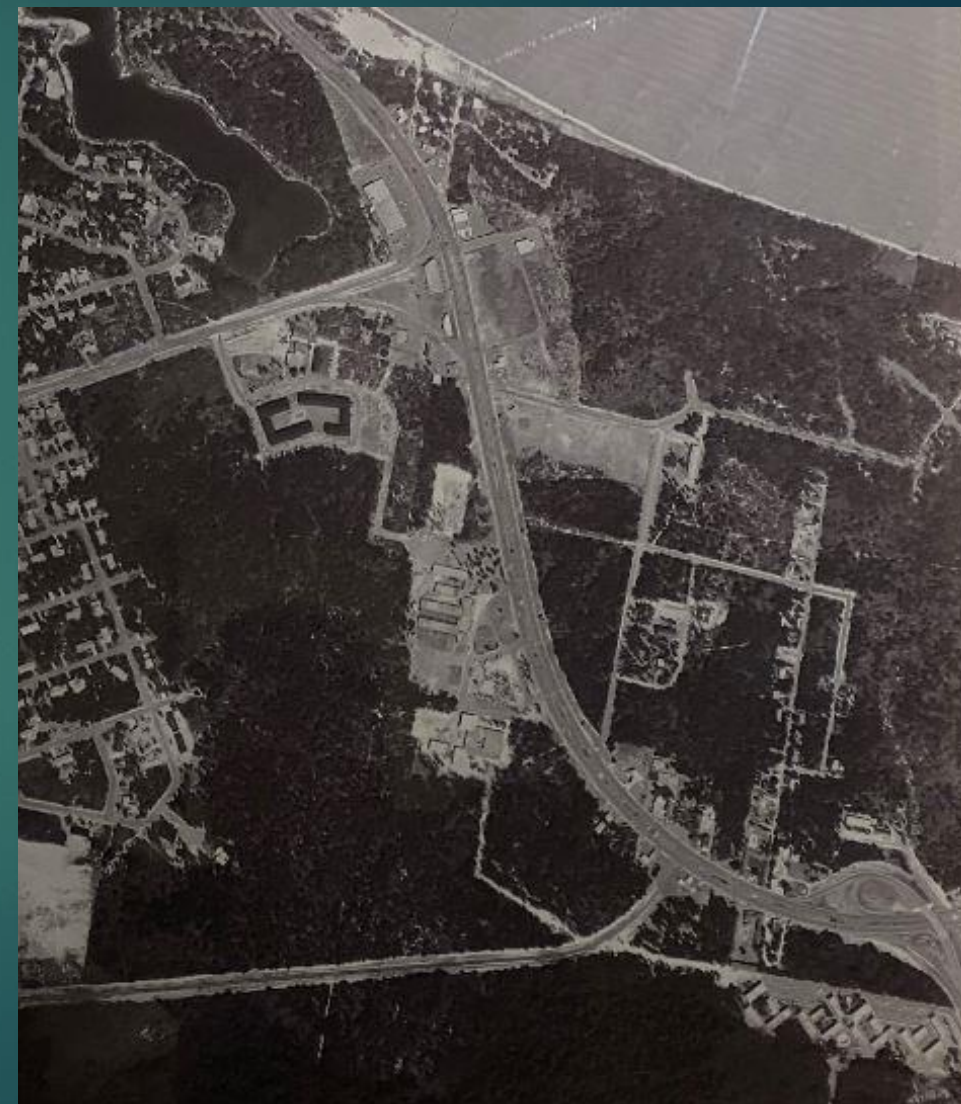




Northcliffe

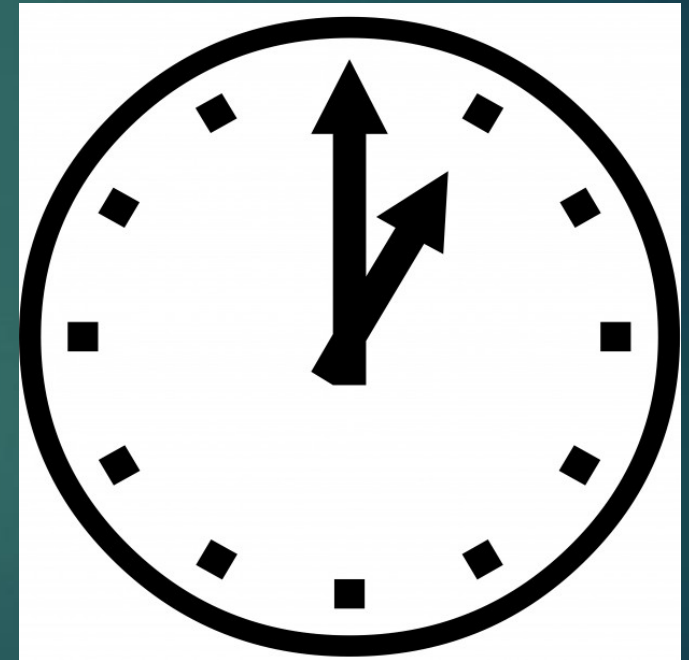
Neighborhood Enhancement Plan

... “WILL PRESERVE AND ENHANCE ITS
HOMETOWN CHARACTER AND
NATURAL ENVIRONMENT TO FOSTER A
HIGH QUALITY OF FAMILY LIFE”



Schedule

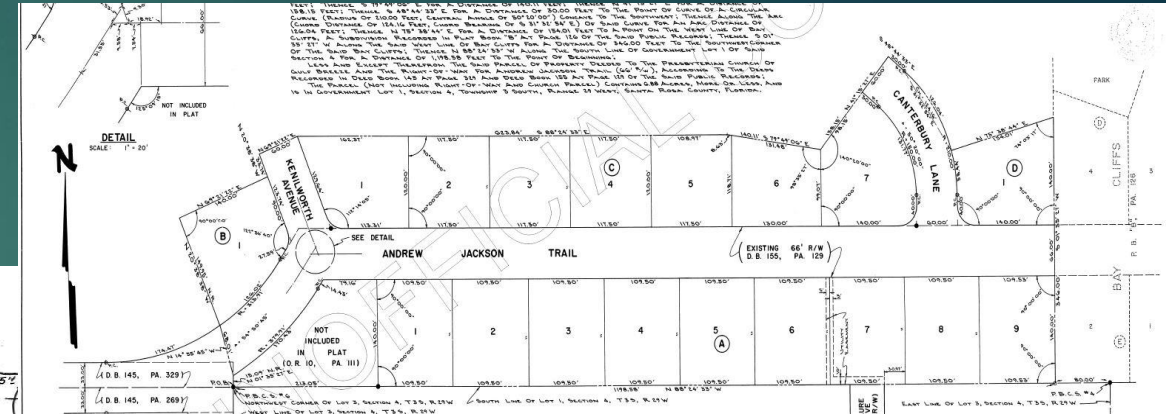
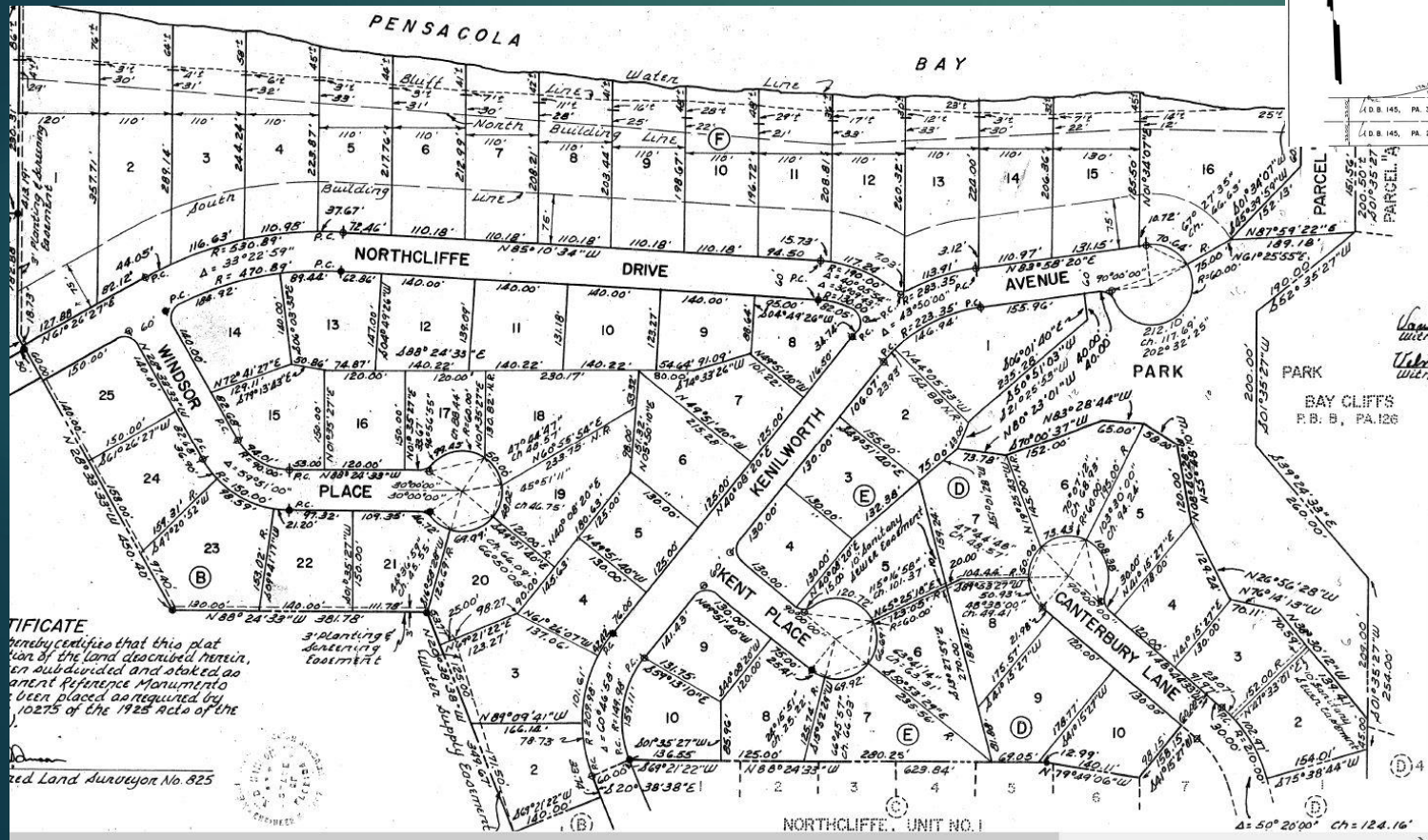
- ▶ Neighborhood Enhancement Plan Process
- ▶ Neighborhood Profile & Characteristics
- ▶ SWOT Analysis
- ▶ Neighborhood Goals
- ▶ Traffic Data
- ▶ Example Projects
- ▶ Northcliffe Survey
- ▶ Q & A



The Sequence

- ▶ **Solicitation** - Residents submit project ideas (Mail, website or kick-off meeting)
- ▶ **Scoping** - Staff review project ideas using screening criteria and generate projects.
- ▶ **Preview** - Residents review and comment on projects (Open house or website)
- ▶ **Polling** – Households in the neighborhood area receive a draft enhancement plan with listed projects to vote for top projects of their choice.
- ▶ **Implementation** – The City implements projects that receive neighborhood censuses; the goal is implementation of the top project within five years.

Neighborhood Profile & Characteristics



SWOT Analysis



- **S**trength: A positive quality about the area that exists now.
- **W**eakness: A negative quality about the area that exists now.
- **O**ppportunity: A Positive possibility that may occur in the future.
- **T**hreat: A negative possibility that may occur in the future.

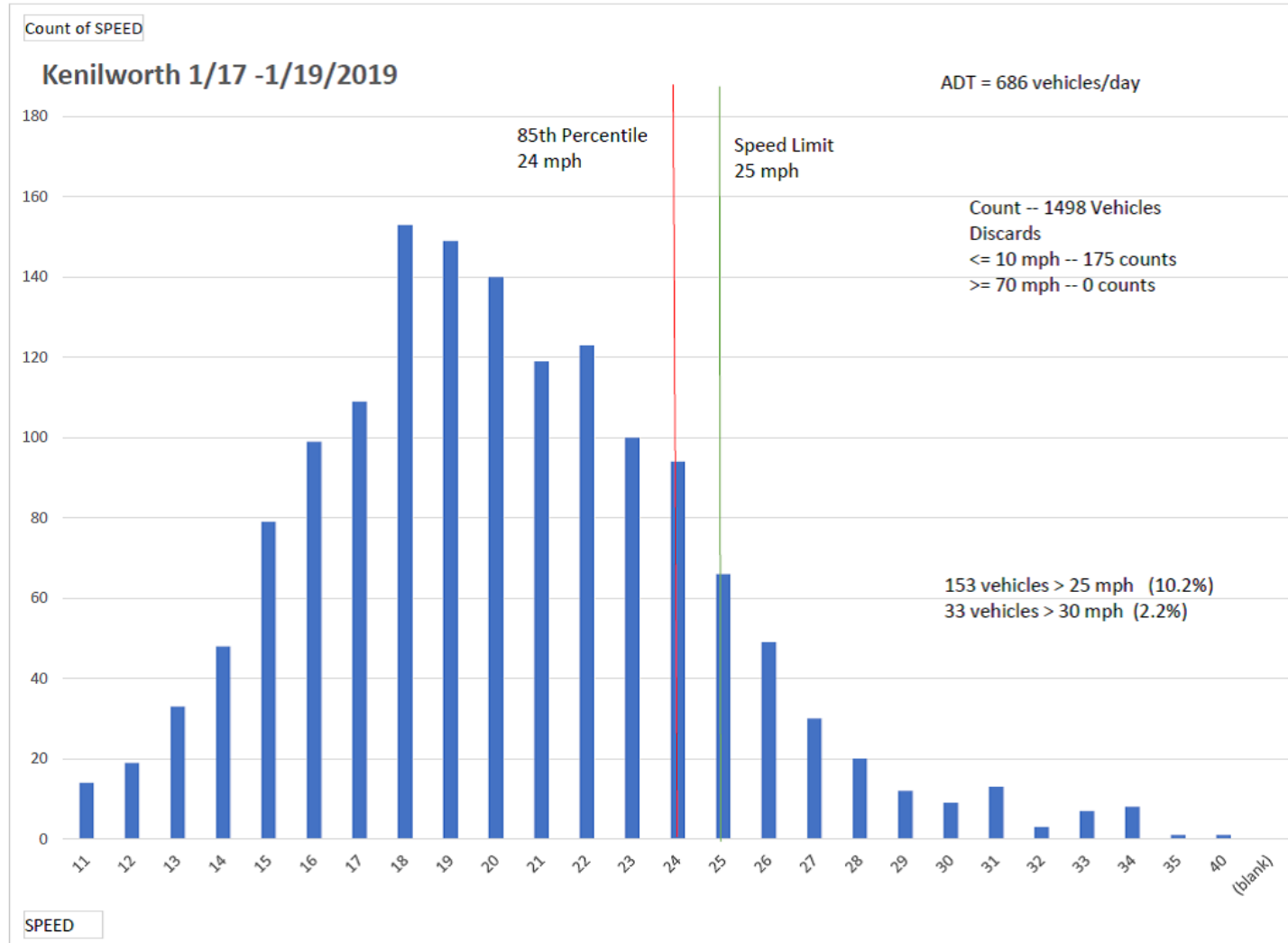
Neighborhood Goals

- ▶ Work to Reduce Cut Through Traffic
- ▶ Work to Reduce traffic speed
- ▶ Maintain property values and resident quality of life

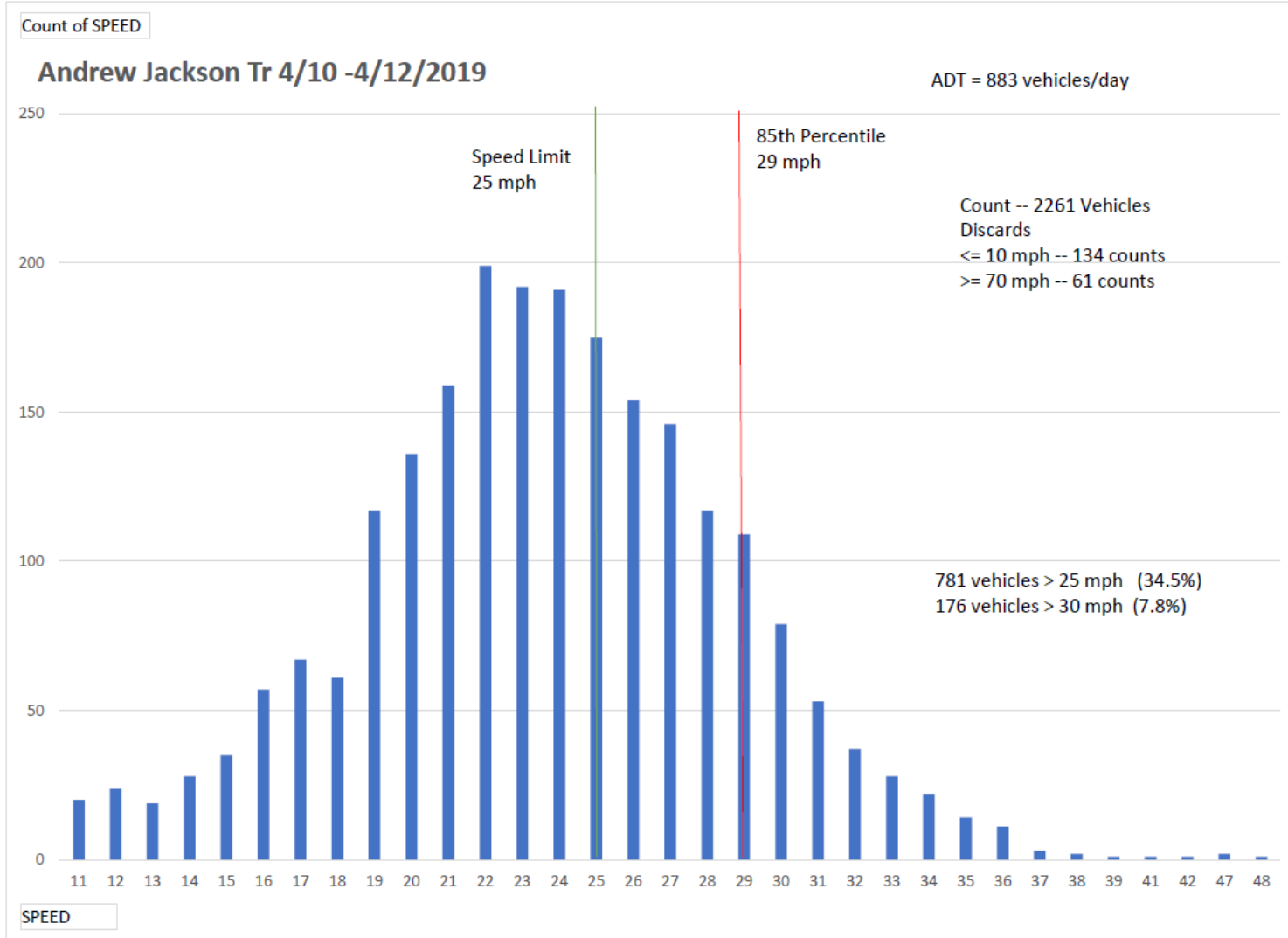
Traffic



Traffic - Speed



Traffic - Speed



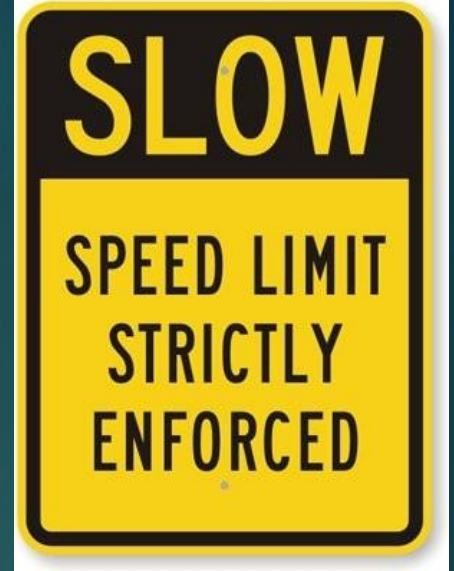
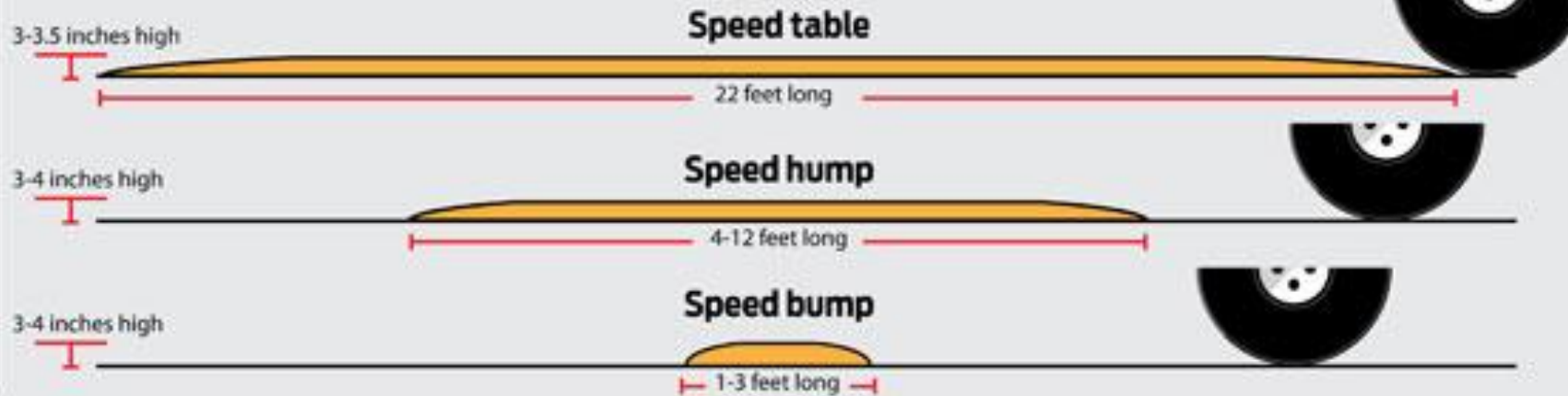
Traffic – Volume



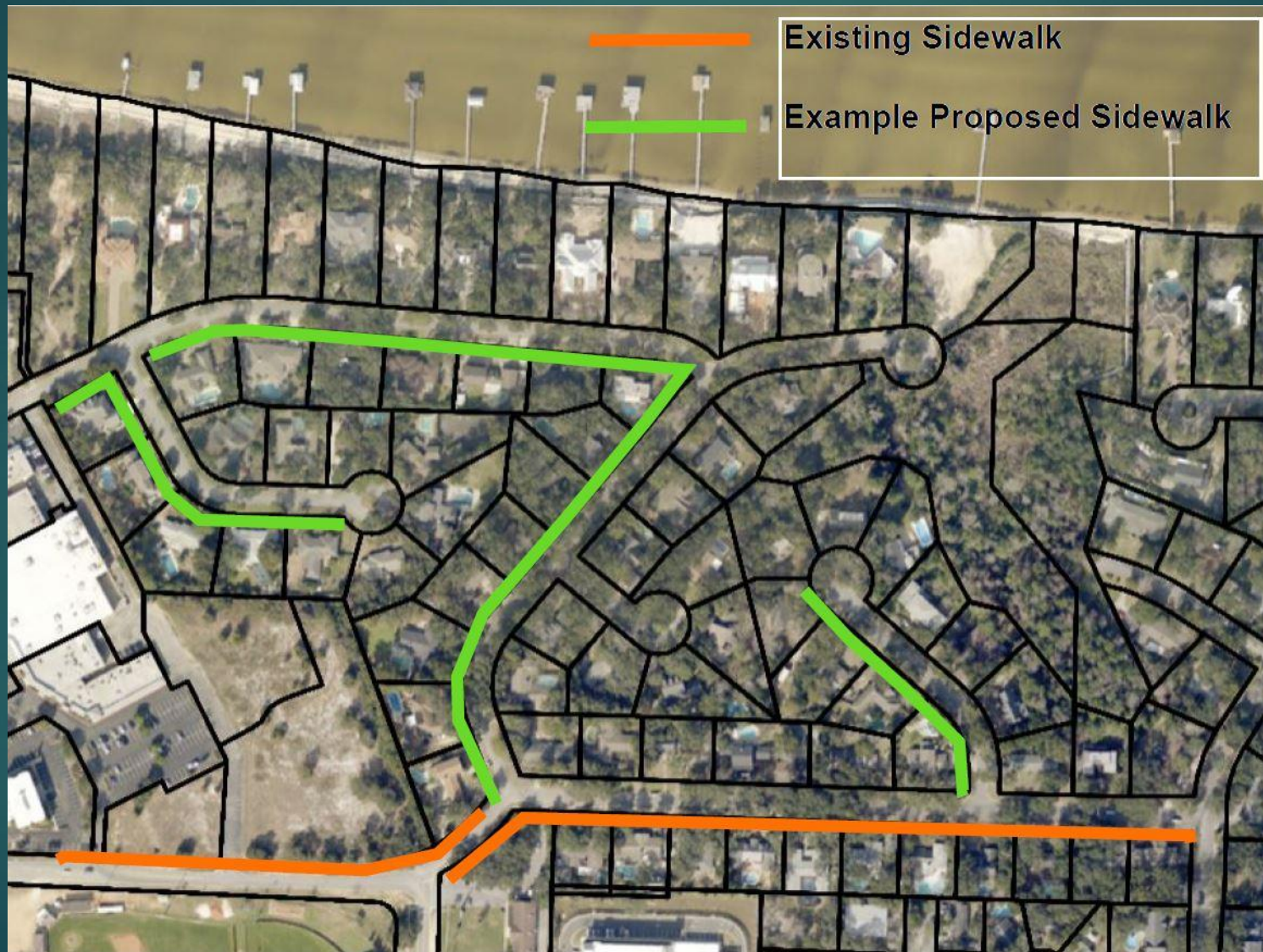
Traffic Calming Features

Bumps, humps and tables

All have different effects on vehicle speeds. Bumps generally result in vehicles slowing to 5 mph or less, while humps cause vehicles to slow to about 20 mph. Speed tables generally result in vehicle operating speeds of 25-30 mph, depending on the spacing between tables.



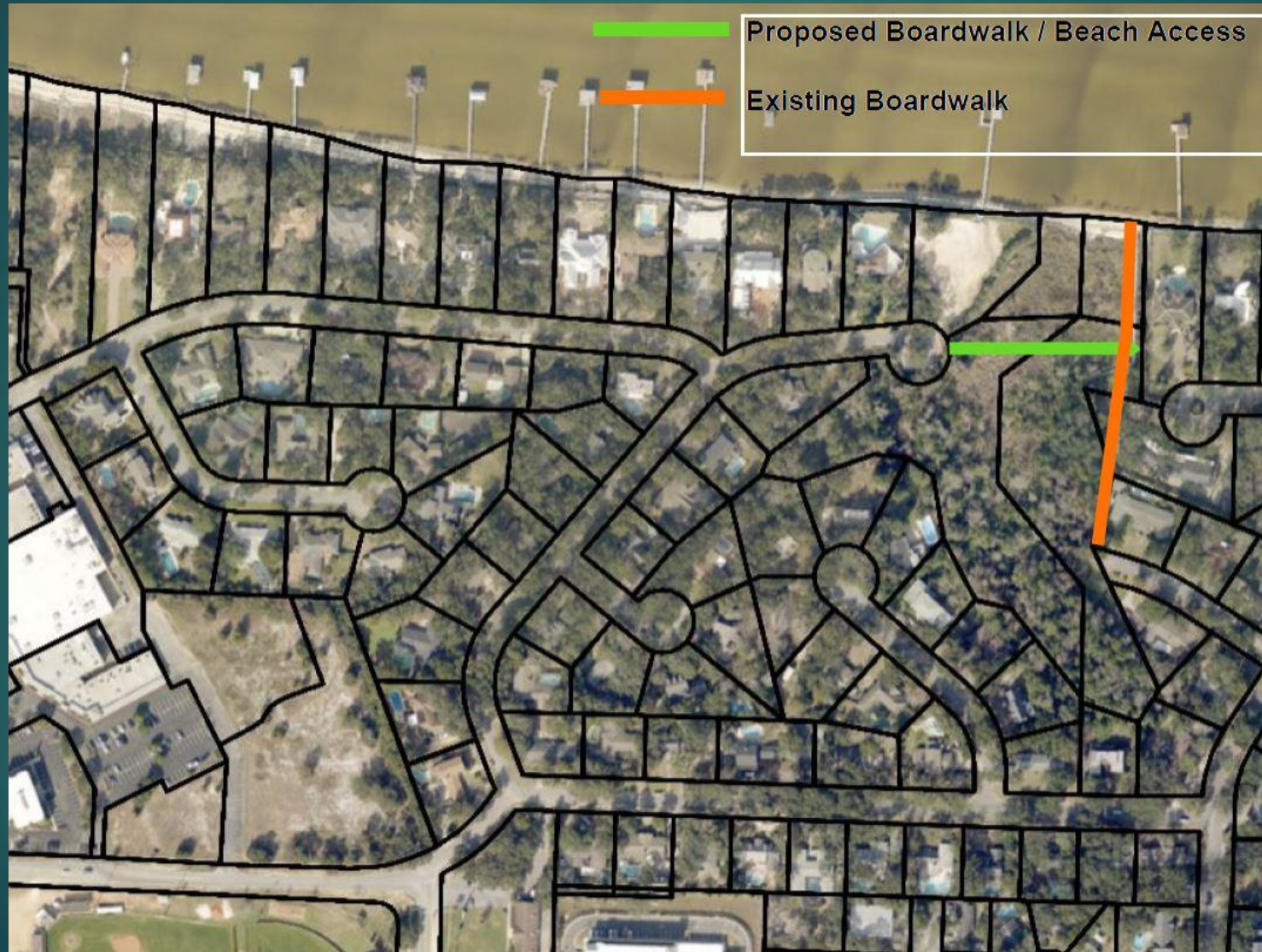
Sidewalk



Lighting



Beach Access Boardwalk



Neighborhood Sign

