

STORMWATER SMART - RESTAURANTS



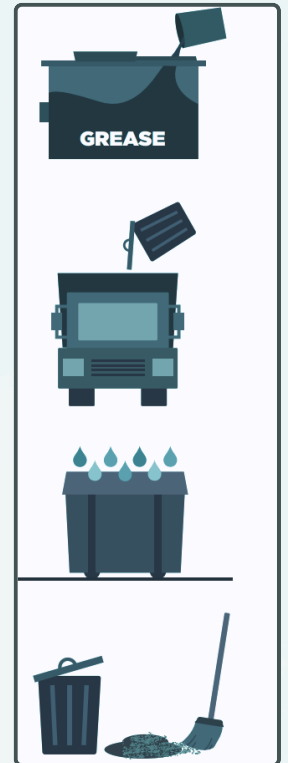
When water from rain, snow, or sleet flows over the ground, it's called "stormwater". Stormwater can pick up paint, chemicals, antifreeze, and oil from vehicles in your parking lot. And when that stormwater flows into street gutters, storm drains, and downstream, it can pollute rivers, lakes, and streams. Follow these simple pollution solutions to help keep our local waterways clean and healthy!

PUT WASTE IN A BIN: Grease and oils can clog pipes and pollute our water. Ensure grease is thrown away in used oil containers and grease traps or recycled, and all food waste goes into trash cans or containers with tops.

AVOID OVERFLOWS: Keep outdoor waste containers away from drains, and ensure they are emptied or collected regularly to avoid overflows.

KEEP A LID ON IT: Remember to close lids tightly on outdoor containers and grease traps, so the rain does not wash waste into the storm drain.

WIPE IT UP: If oil or grease is spilled outside, soak it up with absorbent materials. Sweep up trash and food scraps, then dispose in a garbage can.



ADDITIONAL MEASURES FOR MAINTAINING COMPLIANCE:

Label Storm Drains to remind employees that only rainwater goes down the drain!

Provide Training for Staff on appropriate waste disposal and handling practices.

Utilize Spill Kits, keep them easily accessible, and ensure that staff members are trained in their use for efficient cleanup.

By taking these steps, you're helping to protect our community's natural resources and contributing to a healthier, safer environment. Thank you for your commitment to responsible business practices.

REPORT ILLICIT DISCHARGES:


If you notice any unusual substances or pollutants in stormwater drains - such as oil, chemicals, or soapy water - please report it **IMMEDIATELY!**

ONLINE: (SCAN QR CODE)



<https://cityofgulfbreeze.us/departments/public-works/stormwater-management/>



 **HOTLINE: 850.934.5108**



EMAIL: stormwater@gulfbreezefl.gov